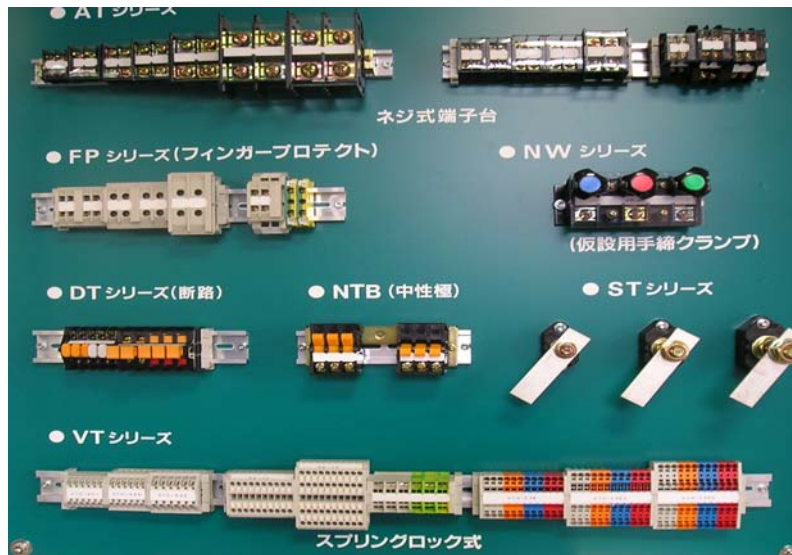


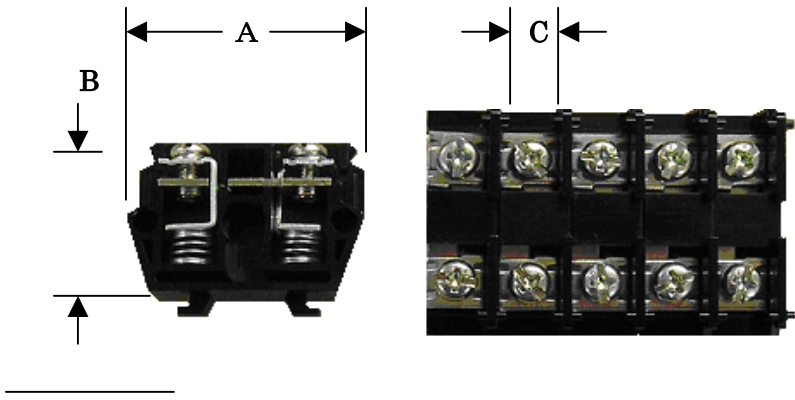


Other type of Terminal Blocks



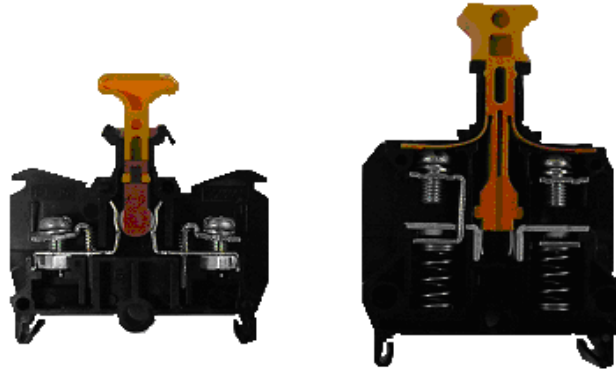
- ★ AT series (Use with C-type 20mm Rail)
AT series
- ★ Disconnecting Type Terminal Blocks
DT series
- ★ Stud Type Terminal Blocks
ST series
- ★ Screw-less Terminal Blocks (Spring force method)
VTC series
VTF series
- ★ Knob Terminal Blocks
NW series
- ★ Neutral Pole Switching Terminal Blocks for Distribution Board
NTB-50

AT series (Use with C-type 20mm Rail)



Disconnecting Type Terminal Blocks

DT series



DT-15

DTN-30

Best Suited for Maintenance and Checks of Control Panel and Switchboard Wiring

- The terminal block can be operated by a single action with ON/OFF indication appearing on the side of the knob.
- The terminal pitch is 8mm for space saving and the Ultra up terminal screw never falls off.
- These terminal blocks are used with the DIN 35mm rail.

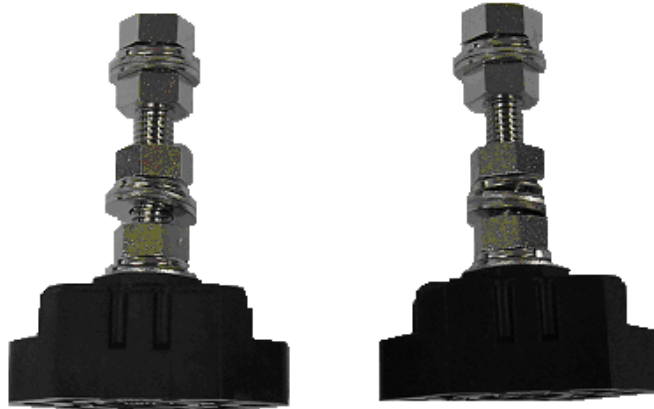
General Performance and Characteristics

- | | |
|--|--|
| <ul style="list-style-type: none"> ● Standard service conditions ● Temperature rise ● Insulation resistance ● Power-frequency withstand voltage ● Applicable standard | <p>Ambient temperature : -25°C to +50°C</p> <p>Relative humidity : 45 to 85%</p> <p>35degrees or les at conductive plate</p> <p>200MΩ or more between live parts and between each live part and metal plate (measured with DC 500V Megger)</p> <p>2500V for 1 minute</p> <p>JIS C 2811</p> |
|--|--|

Model	Rated Voltage & Current	Width : A	Height : B	C
DT-15	AC.DC660V 15A 2.0mm ²	46mm	44mm(off)	6.8mm
DTN-30	AC.DC660V 30A 5.5mm ²	45.4mm	62mm(off)	9.5mm

Stud Type Terminal Blocks

ST series



Best Suited for Relaying, Branching and Supporting

TOGI ST Series of stud type terminal blocks which are the best suited for relaying, branching and supporting can be used in a wide range of applications.

They are manufactured in due consideration of design and cost.

Specifications

Rated voltage	660V
Insulation resistance	500M Ω or more (with DC 500V M)
Withstand voltage	5000V for 1 min
Body material	Reinforced PBT, Black (UL94V-0)
Material for bolts ,nuts and washers F type	Steel : New type of Chromatins
Material for bolts ,nuts and washers B type	Brass: Nickel plated

Model	Rated Voltage & Current	Height 3types (1, 2, 3)	Screw
ST8-**	AC.DC660V 160A 60mm ²	66mm, 91mm, 116mm	M8
ST10-**	AC.DC660V 240A 100mm ²	77mm, 67mm, 117mm	M10
ST12-**	AC.DC660V 400A 200mm ²	95mm, 120mm, 150mm	M12
ST16-**	AC.DC660V 600A 325mm ²	112mm, 142mm, 172mm	M16

* Height type 1 ,2, 3

* material F: Fe B: Bs

Screw-less Terminal Blocks

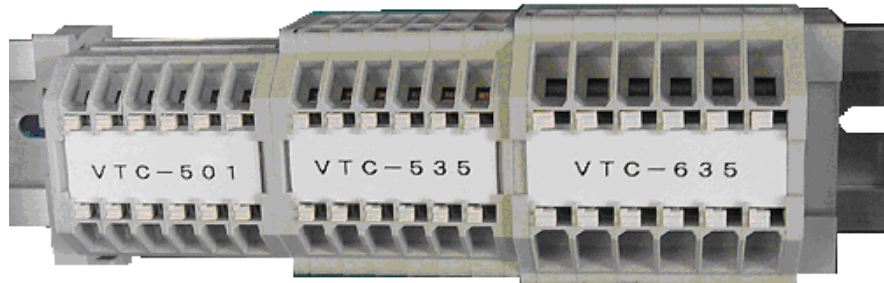
(Spring force method)

- The screw-less series VTC and VTH are the new generation terminal blocks that replace the traditional screw type, which use the strength of the spring to connect the wires.
- The highly optimized springs are superior in material quality and the strength of the springs connects firmly the wires over long period of time. Moreover, the springs are safe from loosen by vibration which routine tightening works as required by the screw type terminal blocks can be eliminated and hence maintenance free can be realize.
- For connecting twisted wires, the minus screwdrivers are used to push in the springs. For single wire or stick type connectors, just insert and one touch connection is made possible.

Features

- The spring force method is used to connect the wires which are vibration resistance and trouble free operation
- This includes the safety design such as high insulation barrier that can prevent the wires from touching the neighboring electrode.
- The small sizes terminal blocks with 5mm pitch (VTC-535), 6mm pitch (VTC635) and 41mm width are more space saving
- It is possible to insert the 12mm width nameplates where the printing can be easily read. Wiring information can be printed on the nameplates with 6-8 characters in vertical order despite the small sizes.) The number of characters varies with the printing machine used)
- Connect the twisted wires by pushing in the switch button with minus screwdriver. For single wire or stick type connector, just insert and one touch connection is made possible.
- For mounting, the standard 35mm-width DIN rail is compatible.
- We do supply the short circuit bar electrodes 2,4 and 8.

VTC Series

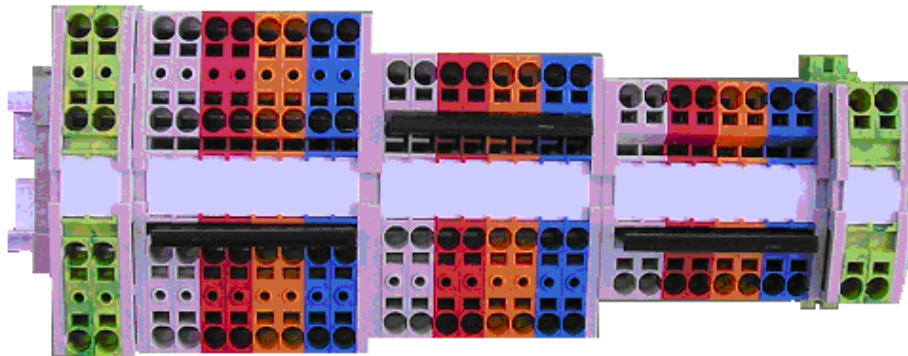


Model	Rated voltage & current	Width	Height	Thickness
VTC-535	AC.DC600V 15A 1. 5mm ²	41mm	25mm	5mm
VTC-635	AC.DC600V 20A 2. 5mm ²	44mm	26.4mm	5mm

VTC-535 & 635 is for DIN rail (35mm) and VTC-501 is for C rail (20mm)

Short Bar: VTC-63BB-2, 4, 8

VTH Series



Ground VTH-2.5DD VTH-2.5SD VTH-2.5S Ground

Model	Rated voltage & current	Width	Height	Thickness
VTH-2.5S	AC.DC600V 20A 2. 5mm ²	45mm	34mm	5.2mm
VTH-2.5SD	AC.DC600V 20A 2. 5mm ²	58mm	34mm	5.2mm
VTH-2.5DD	AC.DC600V 20A 2. 5mm ²	69mm	34mm	5.2mm

Green Color terminal blocks are grounding (earth) terminal.

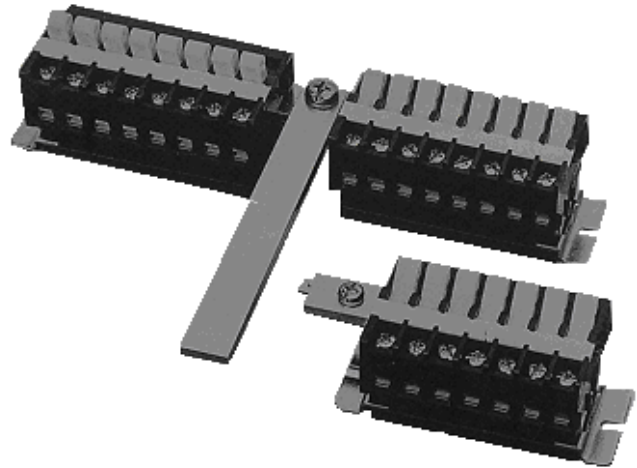
Short Bar: VTH-2.5BB-2, 4, 8

Neutral Disconnect Terminal Blocks for Distribution Board

Features

High Reliability Embodied Boasting of Perfect Safety

The terminal blocks realize perfect safety and high performance thanks to TOGI's unique movable mechanism and sliding contacts, which have been employed through many tests.



- The clamp tightening screw is mechanically prevented from falling off
- The terminal blocks can be installed on a rail or mounted directly. Whichever desired.
- A terminal block can be assembled with your desired number of poles
- Three sizes of steel bus bars can be used
- Some terminal blocks are available with voltage terminals
- Strength test

Tightening strength: standard tightening torque × 1.5 No abnormality

Tensile strength : 200N in direction of wire insertion No abnormality

- Switching test

No load : No abnormality after 1000switchings

Load of AC250V,60A: No abnormality after 50switchings

Temperature rise : 30 degrees or less

- Contact resistance test

No load : 5mΩ or less after 150 switching

Load of AC250,50A : 10mΩ or less after 150 switching

※ The nameplates come in an ends bending type(M-1LE) and a non-bending type (AM1-9). Lot size : 50pcs

General Performance and Characteristics

- Standard service condition
 - Ambient temperature : -15°C to 60°C (No freezing or condensation)
 - Relative humidity : 40 to 85%
- Temperature rise : 35 degree or less at conductive plate
- Insulation resistance
 - 200MΩ or more between live parts and between each live part and metal plate
(Measured with DC 500V megger)
- Power-frequency withstand voltage
 - 2500V for 1 minute
- Applicable standard
 - JIS C8480 (Cabinet type distribution board)

Specifications

Rated Voltage	265 / 460V
Rated current	50A
Applicable wire	MAX 14mm ²
Connection type	Push-tightening terminal
Connection screw	M5 × 12 Pan head machine screw
Standard tightening torque	2.5 – 3.0N.m

Note on assembly

- ※ The copper bus bar to be used should be a dedicated thinned one. Use of a copper strip, which is not plated, can cause temperature rise.
- ※ The number of poles must be so determined that the load current time the number of poles is below the current capacity of the copper bus bar. (MAX connectable poles is 20poles)

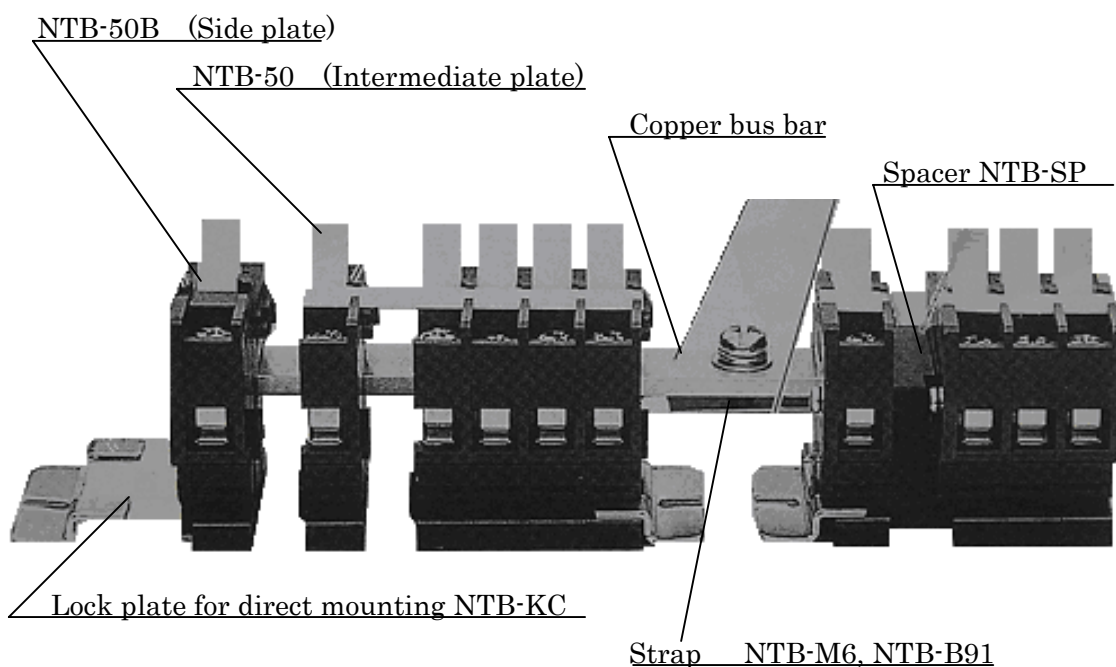
Current capacity of copper bus bar

Rated current (A)	Current density(A/mm ²)
To 225	2.5max
Over 100 to 225	2.0max
Over 225 to 400	1.8max
Over 400 to 600	1.5max

Standard TOGI copper bus bar (tin plated)

Model	Size	Qty./pack
DB-320	3t × 20w × 490L	5pcs
DB-418	4t × 18w × 490L	5pcs
DB-612	6t × 120 × 490L	5pcs

Notes on assembly



NTB-50 Intermediate plate only

: Basic terminal unit

NTB-50B Intermediate plate and side plate

: Side plate unit to complete unit assembly

NTB-50V Intermediate plate and voltage terminal

: Basic unit with voltage terminal

NYB-50VB Intermediates plate, voltage terminal and side plate

: Side plate unit used on one side to complete the unit with voltage terminal

- NTB-SP** **Spacer**
 : Elimination of wasteful detour of wire
- NTB-KC** **Lock plate**
 : Lock plate for use at direct mounting. Used on left and right sides of
 Assembled unit
- (Strap)**
- NTB-M6**
 : Used to lock copper bar and bus bar and lock the unit on the bus bar
 side
- NTB-B9**
 : Same as above and fixed with an M8 screw and a nut from rear side