

4 Point Terminal Relay

PCRY- 4TA

TOGI

TOYOGIKEN



Model No. PCR Y-4TA

FEATURES

- 1: Space-saving type with four independent points on a base measuring 31.8×65×37.3mm (W×D×H)
This contributes to a more compact control panel
- 2: Each terminal circuit is independent from one another
- 3: Two pieces of Short Bars are enclosed together with Terminal Relay
The Short Bar ensures easy connection of common and adjacent terminals
- 4: Provided with a terminal cover that prevents electric-shock
- 5: PA relays, which have high sensitivity twin contacts, can be installed in 4-Point Terminal
- 6: Equipped with LED display to allow easy confirmation of operation
- 7: Can be mounted either on DIN track or direct mounting with screws
- 8: Relay installation and removal can be easily accomplished with the removal key accessory

RATINGS

1: Input ratings (per relay)

Rated input voltage	Allowable variation of rated input voltage	Allowable input current
24V DC	24V DC±10%	0.2A

Note :The input current value above is the allowable current when no relay is installed.

Input rating of AP relay installed in 4-POINT TERMINAL (per relay, at 20°C 68 ° F)

Type	Rated voltage	Operated voltage	Release voltage	Input current
※1 :AP A3312	24V DC	※2 :Max 17.9V DC	Min. 1.6V	Approx. 10.5mA

※1 : Possible relays : model No AP A3312 Matsushita (Panasonic)

※2 : Relay max. 16.8V + include LED max. 1.1V

2: Output rating per relay

Allowable load voltage	Allowable load current
600V (DC), 600V (AC Peak Value)	3A

Note :The value above is the allowable value when no relay is installed.

Output rating of AP relay installed in 4-POINT TERMINAL (per relay, at 20°C 68 ° F)

Specification	Item	Performance
Contact rating	Rated control capacity	3A 250V AC, 3A 30V DC
	Max allowable contact power (resistive load)	500V A (AC), 60W (DC)
	Max allowable contact voltage	250V AC, 30V DC
	Max allowable contact current	3A
	Max load (ref. value)	100mV 100 μA
Expected life Min. operations	Electric (resistive load)	30,000 : 3A 250V AC, 3A 30V DC 100,000 : 2A 250V AC, 2A 300V DC
	Mechanical (at 180rpm)	20,000,000

Note : During 4-point operation, the rating of each relay is also as shown above.

PERFORMANCE

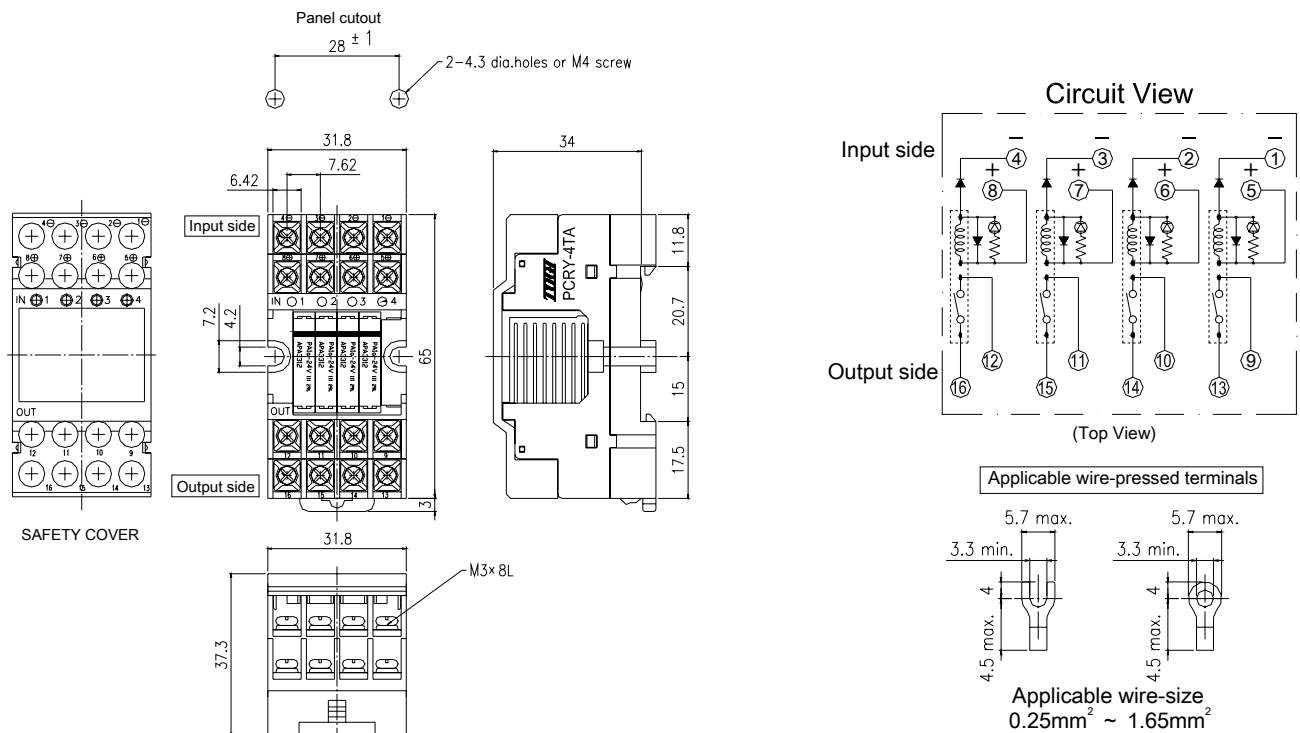
Item		Performance
Breakdown voltage	Between input and output	2,000 Vms for 1 min.
	Between different terminals (between relays, both ways)	1,500 Vms for 1 min.
Insulation resistance		Min. 100 MΩ (Using 500 V DC megger, measuring same place as breakdown voltage)
Vibration resistance (destructive)		10 to 55 Hz at double amplitude 1 min .039 inch
Vibration resistance (functional)		10 to 55Hz at double amplitude 1 min .039 inch
Shock resistance (destructive)		Min. 196 m/s ²
Shock resistance (functional)		Min. 98 m/s ²
Ambient temperature		-25°C to +55°C -4°F to +131°F
Ambient humidity		35% to 85% R.H. (Not freezing and condensing)
Storage temperature		-25°C to +80°C -4°F to +131°F (Not freezing and condensing)
Terminal screwfasten torque		1.0 to 1.2·Nm
Weight		Approx. 85g

Notes 1: The value of breakdown voltage and insulation resistance is the initial one.

2: Condensing occurs when the unit relay is exposed to sudden temperature change in a high temperature and high humidity atmosphere.

This may cause some trouble like insulation failure of the socket or the print circuit board.

DIMENSIONS



ACCESSORIES

Short Bar

Short Bars are used to bridge terminals.

Two pieces of Short Bar are enclosed together with Terminal Relay

