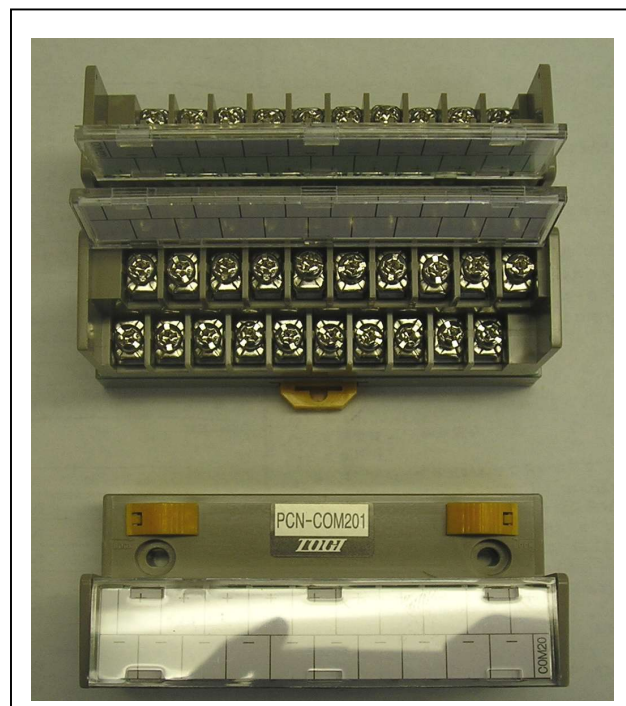


PCN-COM series

This series are designed for power supply Common Terminal

Characteristics

Rated voltage	AC/DC125V
Rated current	10A
Withstand voltages	AC500V 1min
Insulation resistance	100M or above
Applicable wire	1.25mm ² Max
Standard clamping torque	1.2N.m(12Kgf.cm)
Ambient temperature	-10 +50
Standard	JIS C2811



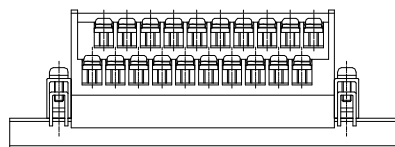
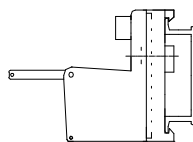
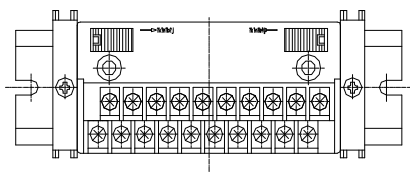
PCN - COM 2 0 1

Model

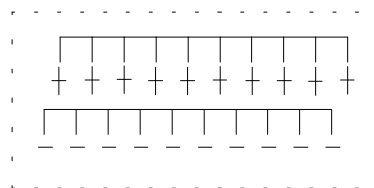
PCN - COM 2 0 1

Size A x B

86 x 40

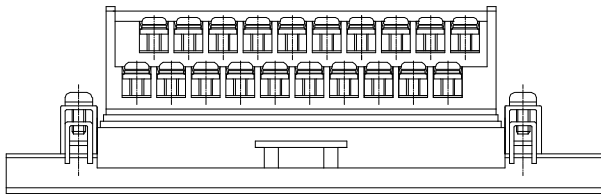
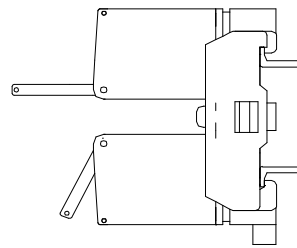
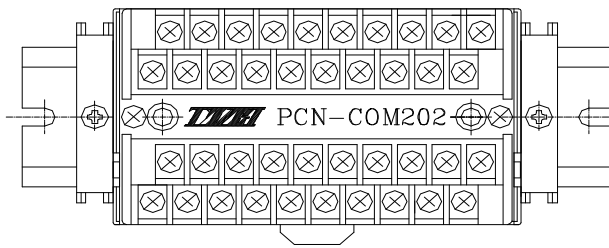


Wire Connection

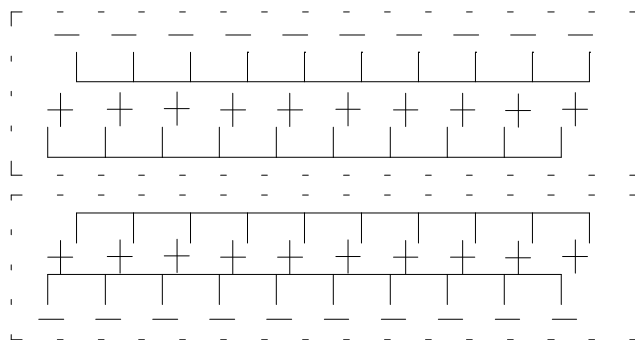


PCN - COM202

Model **Size A x B**
PCN - COM202 90 x 54

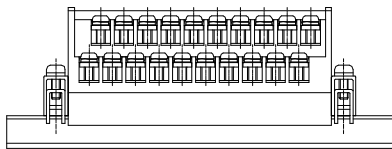
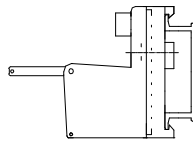
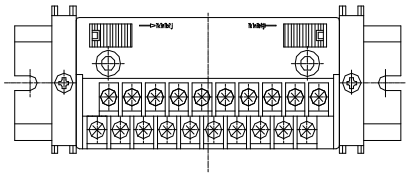


Wire Connection

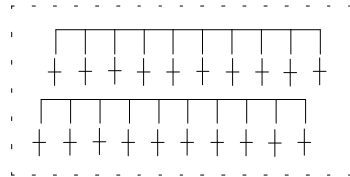


PCN - COM201P

Model **Size A x B**
PCN - COM201P 86 x 40

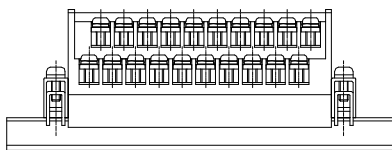
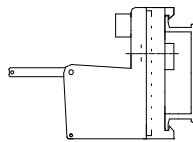
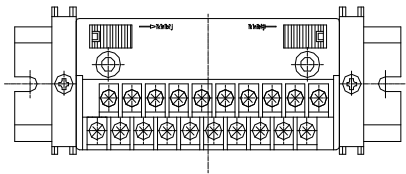


Wire Connection



PCN - COM201N

Model **Size A x B**
PCN - COM201N 86 x 40



Wire Connection

